

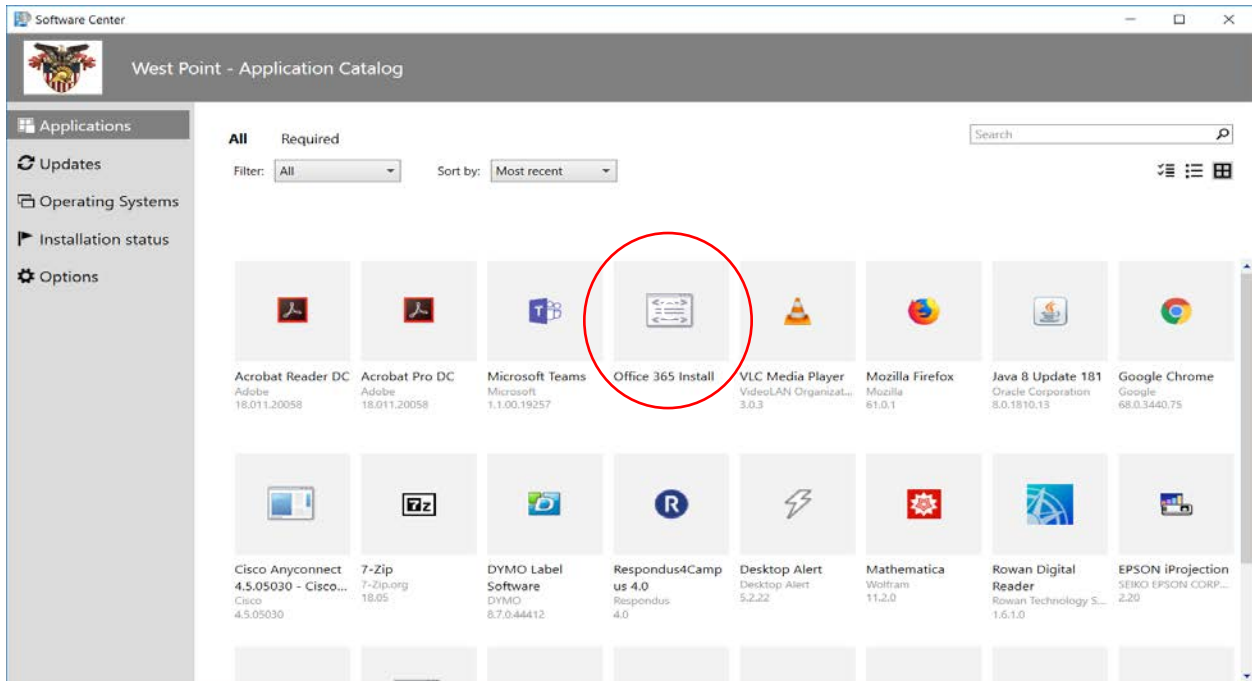
# Office 365 Down-load (From software center )

## Software Center Down-load:

**STEP 1:** Click the Windows Start button at the bottom left of the computer screen.

**STEP 2:** Type in “*Software Center*”.

**STEP 3:** Once in Software Center look for “*Office 365 Install*”.



**STEP 4:** Click “*Office 365 Install*” and then click “*Install*”. **Please note: before you click “*Install*” make sure all your work done in office products (2013) are saved because the update (Office products 2016) will shut the old office products down.**

